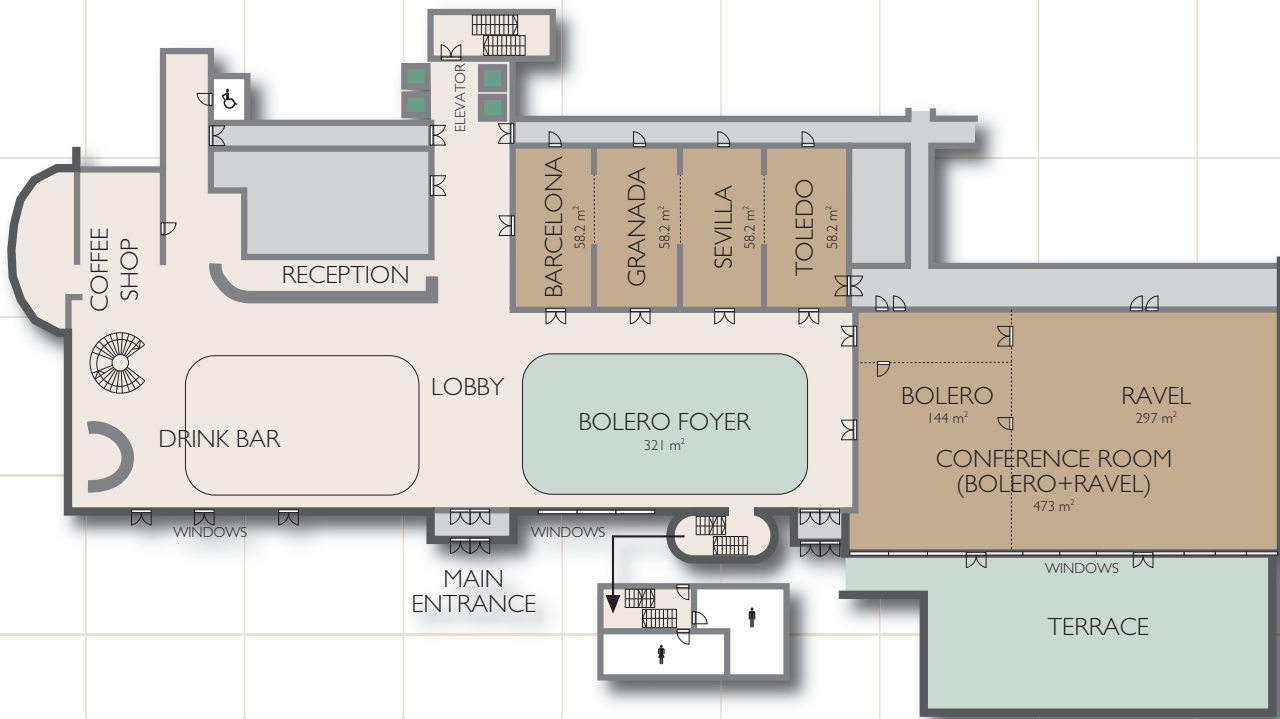
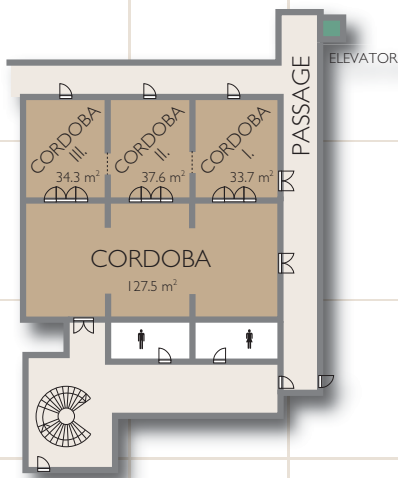


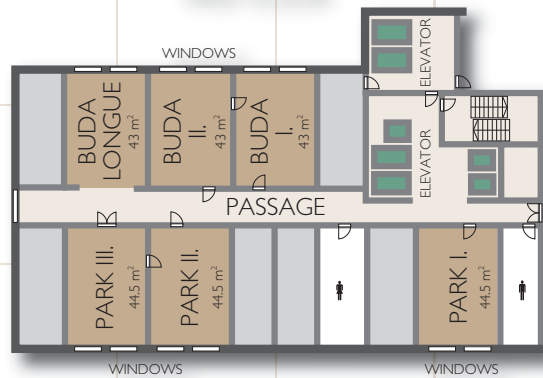
GROUND FLOOR



LOWER-GROUND FLOOR



FIRST FLOOR



Scale: 1:530



Function room	⊗	Dimension (m)	Size (m²)	Theatre	Classroom	Banquet	U-shape	Reception	Boardroom
Conference Room (Ravel + Bolero)	⊗	16.6 x 28.5 x 3.4	473	500	280	280	–	400	–
Ravel ¹	⊗	16.6 x 17.9 x 3.4	297	300	170	150	60	200	–
Bolero ¹	⊗	13.6 x 10.6 x 3.4	144	120	80	60	30	120	–
Bolero Foyer	⊗	13.6 x 23.6 x 3.4	321	–	–	120	–	200	–
Toledo ¹	⊗	5.6 x 10.4 x 2.8	58.2	50	40	40	26	40	22
Sevilla ¹	⊗	5.6 x 10.4 x 2.8	58.2	50	40	40	26	40	22
Granada ¹	⊗	5.6 x 10.4 x 2.8	58.2	50	40	40	26	40	22
Barcelona ¹	⊗	5.6 x 10.4 x 2.8	58.2	50	40	40	26	40	22
Cordoba	⊗	17 x 7.5 x 2.4	127.5	100	70	80	40	100	48
Cordoba Lounge I. ²	⊗	5.1 x 6.6 x 2.4	33.7	25	20	–	15	–	18
Cordoba Lounge II. ²	⊗	5.7 x 6.6 x 2.4	37.6	25	20	–	15	–	18
Cordoba Lounge III. ²	⊗	5.2 x 6.6 x 2.4	34.3	25	20	–	15	–	18
Park 1. ³	⊗	5.5 x 8.1 x 2.4	44.5	35	30	–	20	–	16
Park 2. ³	⊗	5.5 x 8.1 x 2.4	44.5	35	30	–	20	–	16
Park 3. ³	⊗	5.5 x 8.1 x 2.4	44.5	35	30	–	20	–	16
Buda 1. ⁴	⊗	5.5 x 7.8 x 2.4	43	35	30	–	20	–	16
Buda 2. ⁴	⊗	5.5 x 7.8 x 2.4	43	35	30	–	20	–	16
Buda Lounge	⊗	5.5 x 7.8 x 2.4	43	–	–	–	–	30	–

¹ Connecting rooms / ² Connecting rooms / ³ Connecting rooms / ⁴ Connecting rooms ⊗ Rooms with natural light