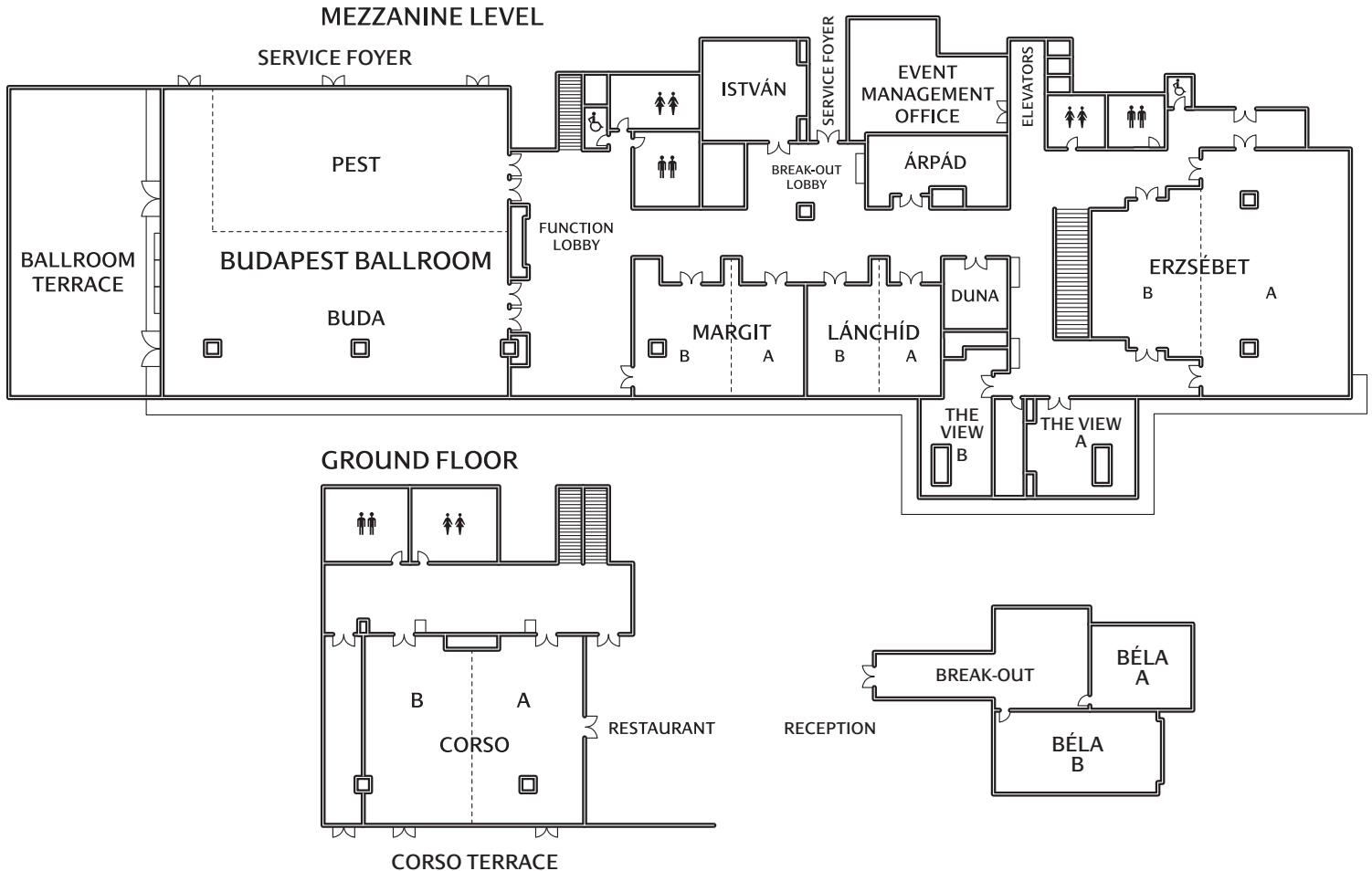



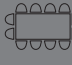
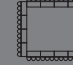





# Banquet Floorplan of the Budapest Marriott Hotel



# Banquet Floorplan of the Budapest Marriott Hotel

Name	Location	Square meter	Lenght x width x height	Capacity in Theatre 	Capacity in Classroom 	Capacity U-shape 	Capacity in Boardroom 	Capacity in Hollow square 	Capacity in Cabaret style 	Capacity in Banquet 	Capacity in Reception 
<b>Budapest Ballroom</b>	Mezzanine	614	25.5x24x3,3	650	350	-	-	-	270	450	600
<b>Buda Room</b>	Mezzanine	306	25.5x12x3.3	380	165	72	75	75	150	250	300
<b>Pest Room</b>	Mezzanine	248	22.5x11x3.3	250	150	63	69	69	120	200	250
<b>Erzsébet Ballroom</b>	Mezzanine	360	-	350	150	65	70	70	144	240	300
<b>Erzsébet A</b>	Mezzanine	265	18.2x14.5x4.5	250	120	50	55	55	108	180	200
<b>Erzsébet B</b>	Mezzanine	95	11.5x8.3x4.5	70	48	30	30	36	36	60	80
<b>Corso Room</b>	Ground Floor	182	12.5x14.5x3.3	140	80	50	60	60	78	130	180
<b>Corso A</b>	Ground Floor	91.5	12.5x7.3x3.3	70	40	35	40	40	36	60	90
<b>Corso B</b>	Ground Floor	91.5	12.5x7.3x3.3	70	40	35	40	40	36	60	90
<b>Margit Room</b>	Mezzanine	114	8.8x13x3.1	100	50	30	36	36	36	60	80
<b>Margit A</b>	Mezzanine	47	8.8x5.4x3.1	50	24	22	26	26	12	20	40
<b>Margit B</b>	Mezzanine	67	8.8x7.5x3.1	50	24	22	26	26	18	30	40
<b>Lánchíd Room</b>	Mezzanine	90	8.8x10.3x3.1	100	50	30	36	36	36	60	80
<b>Lánchíd A</b>	Mezzanine	44	8.8x5x3.1	50	24	22	26	26	12	20	40
<b>Lánchíd B</b>	Mezzanine	46	8.8x5.3x3.1	50	24	22	26	26	12	20	40
<b>István</b>	Mezzanine	49	7.7x6.4x3.1	40	24	24	30	30	12	20	40
<b>Árpád</b>	Mezzanine	37	4x9.2x3.1	30	24	24	26	26	12	20	30
<b>The View A</b>	Mezzanine	56	7x8x3.1	-	-	-	16	-	12	16	30
<b>The View B</b>	Mezzanine	29	4.2x6.9x3.1	-	-	-	12	-	-	12	-
<b>Béla A</b>	Ground Floor	26	5x5.2x2.9	-	-	-	12	-	6	12	-
<b>Béla B</b>	Ground Floor	36	4.5x8x2.9	30	16	20	16	22	12	20	-
<b>Duna Boardroom</b>	Mezzanine	20	4.2x4.8x3.1	-	-	-	10	-	6	-	-
<b>Pre-function Lobby</b>	Mezzanine	140	7.5x18.5x3.3	-	-	-	-	-	-	-	150
<b>Break-out Lobby</b>	Mezzanine	112	11.4x9.1x3.3	-	-	-	-	-	-	-	120